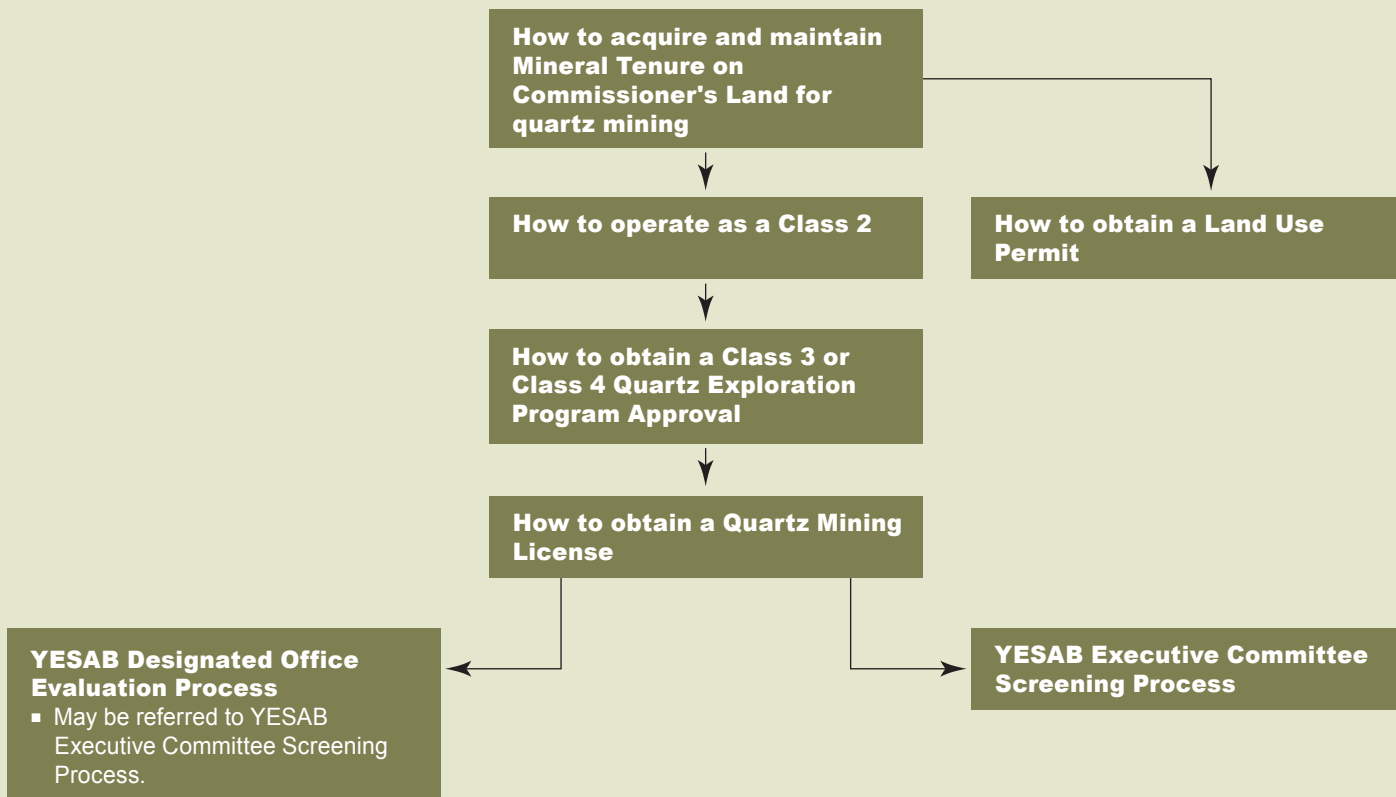


Overview of Quartz Permitting Process



Reference: *Guide to Hard Rock Prospecting, Exploration and Mining in Yukon.*

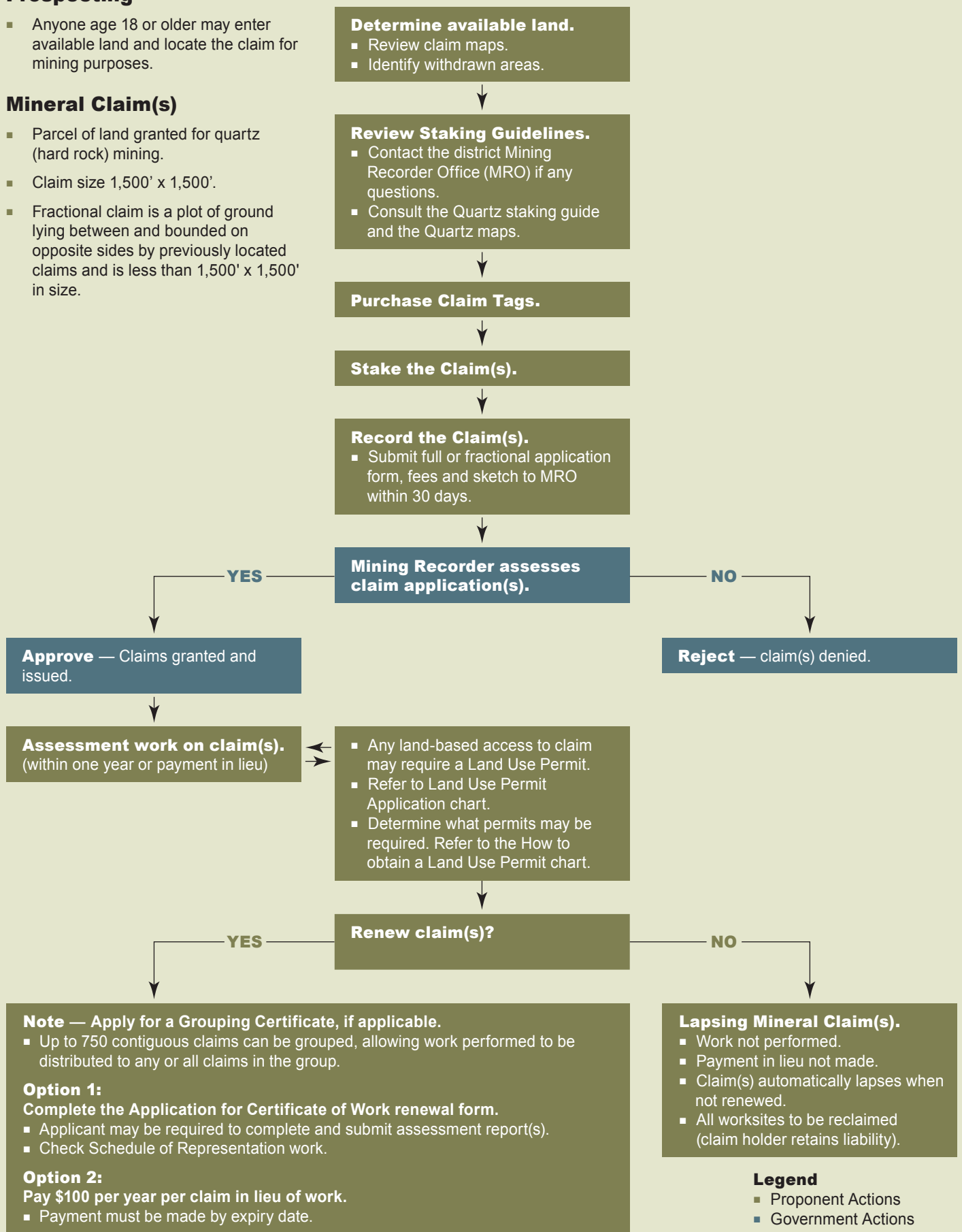
How to acquire and maintain Mineral Tenure on Commissioner's Land for quartz mining

Prospecting

- Anyone age 18 or older may enter available land and locate the claim for mining purposes.

Mineral Claim(s)

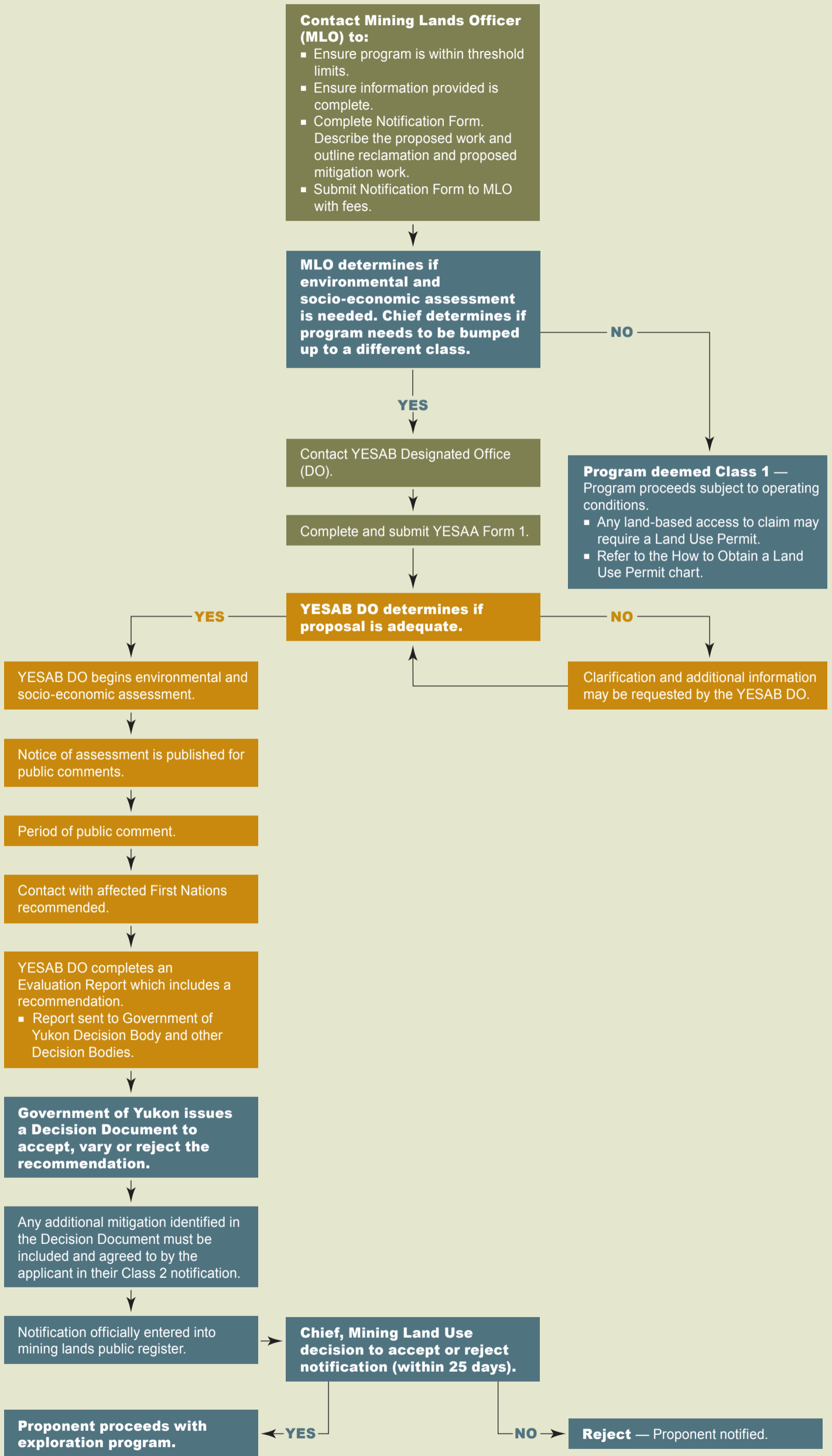
- Parcel of land granted for quartz (hard rock) mining.
- Claim size 1,500' x 1,500'.
- Fractional claim is a plot of ground lying between and bounded on opposite sides by previously located claims and is less than 1,500' x 1,500' in size.



Legend

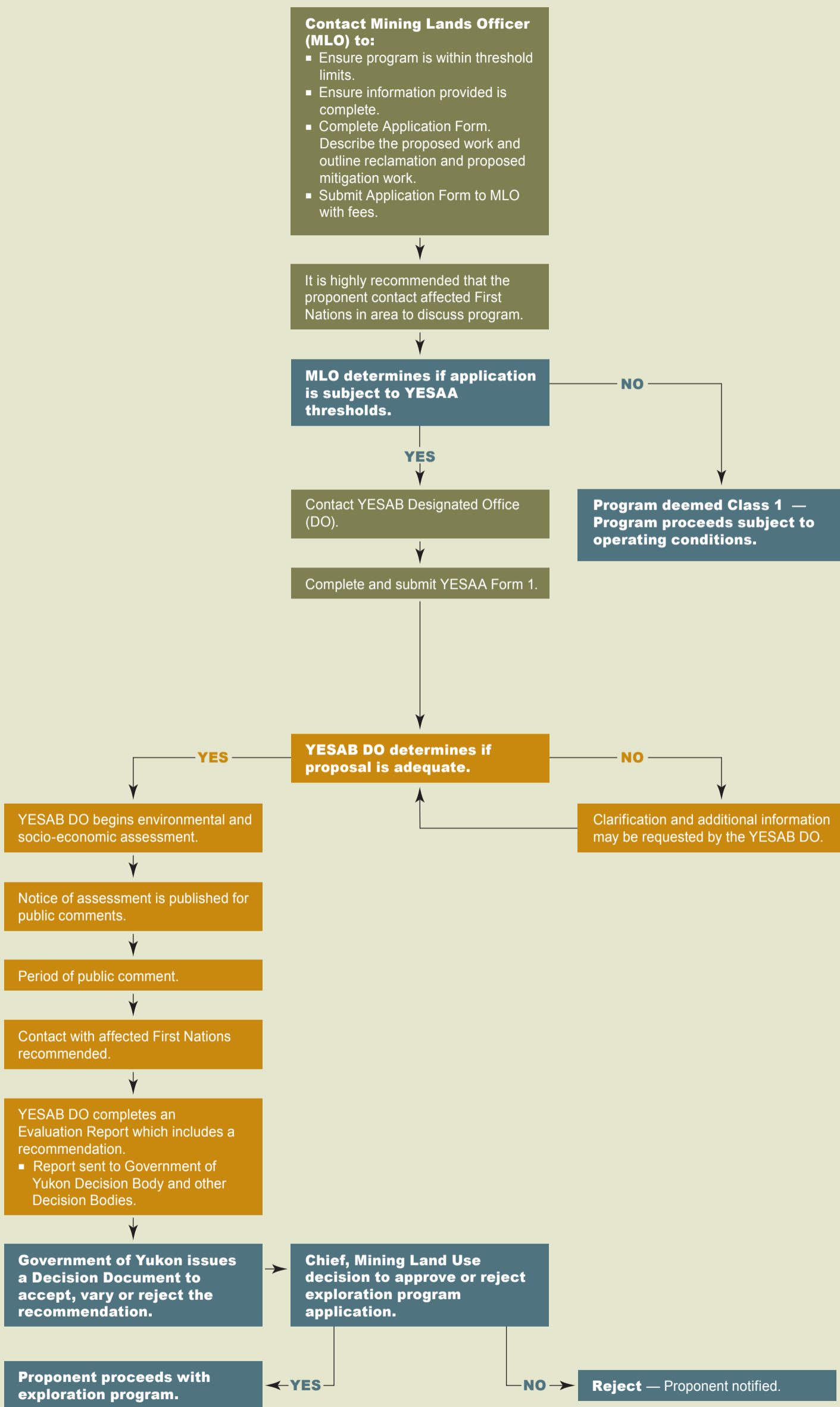
- Proponent Actions
- Government Actions
- YESAB Actions
- Yukon Water Board Actions

How to Operate as a Class 2



- Legend**
- Proponent Actions
 - Government Actions
 - YESAB Actions
 - Yukon Water Board Actions

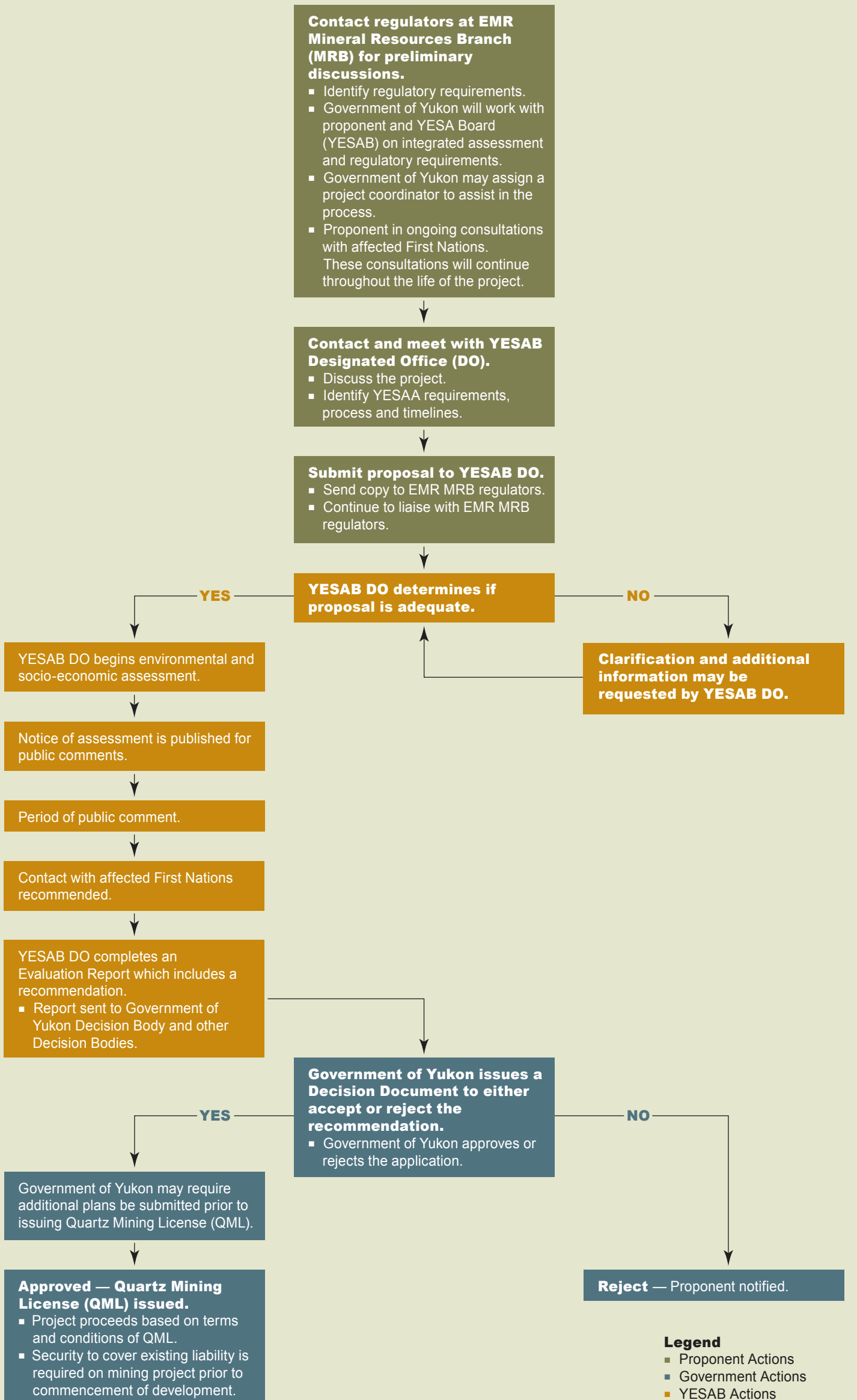
How to obtain a Class 3 or Class 4 Quartz Exploration Program Approval



- Legend**
- Proponent Actions
 - Government Actions
 - YESAB Actions
 - Yukon Water Board Actions

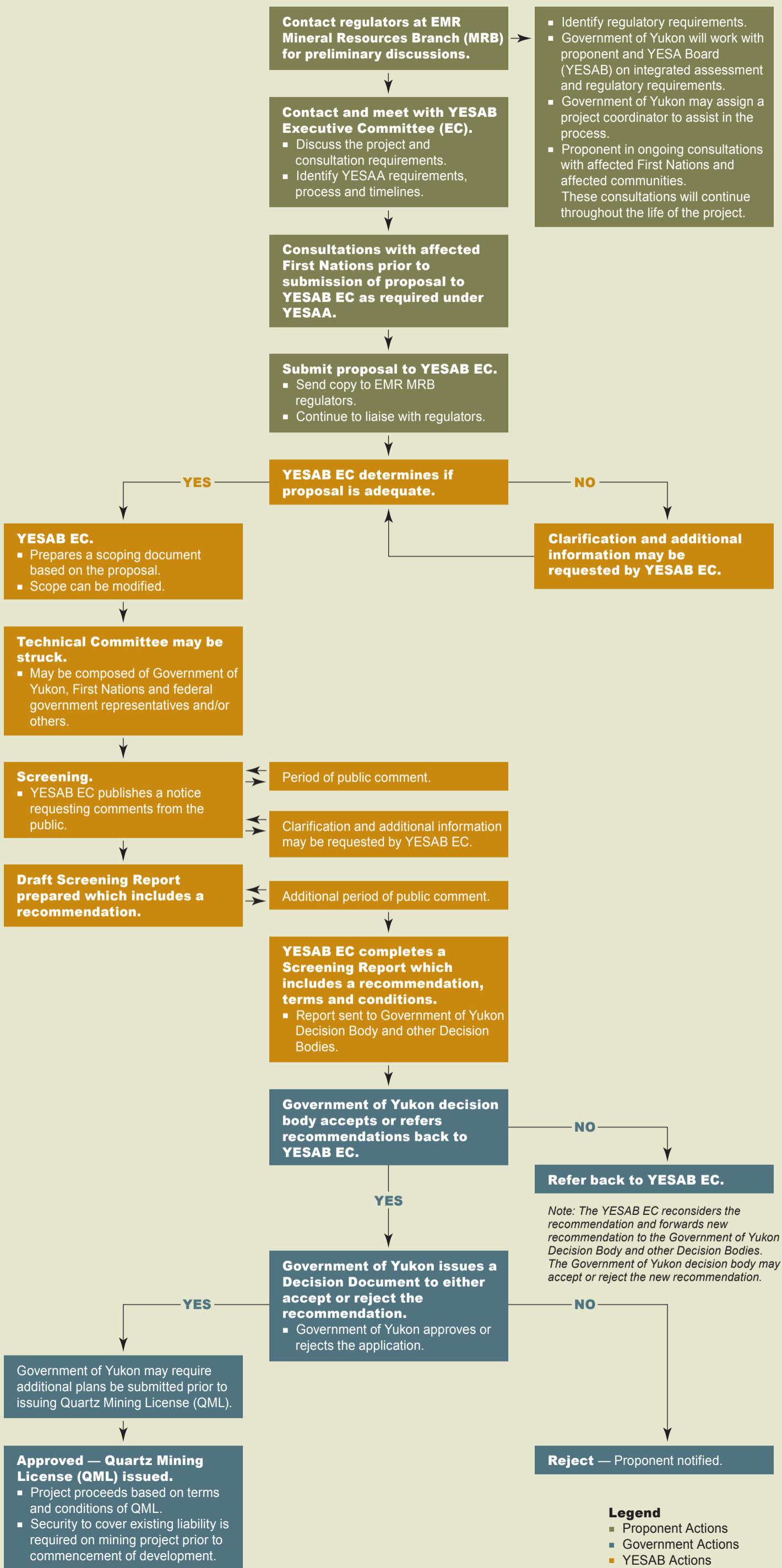
How to obtain a Quartz Mining License

YESAB Designated Office Evaluation Process



How to obtain a Quartz Mining License

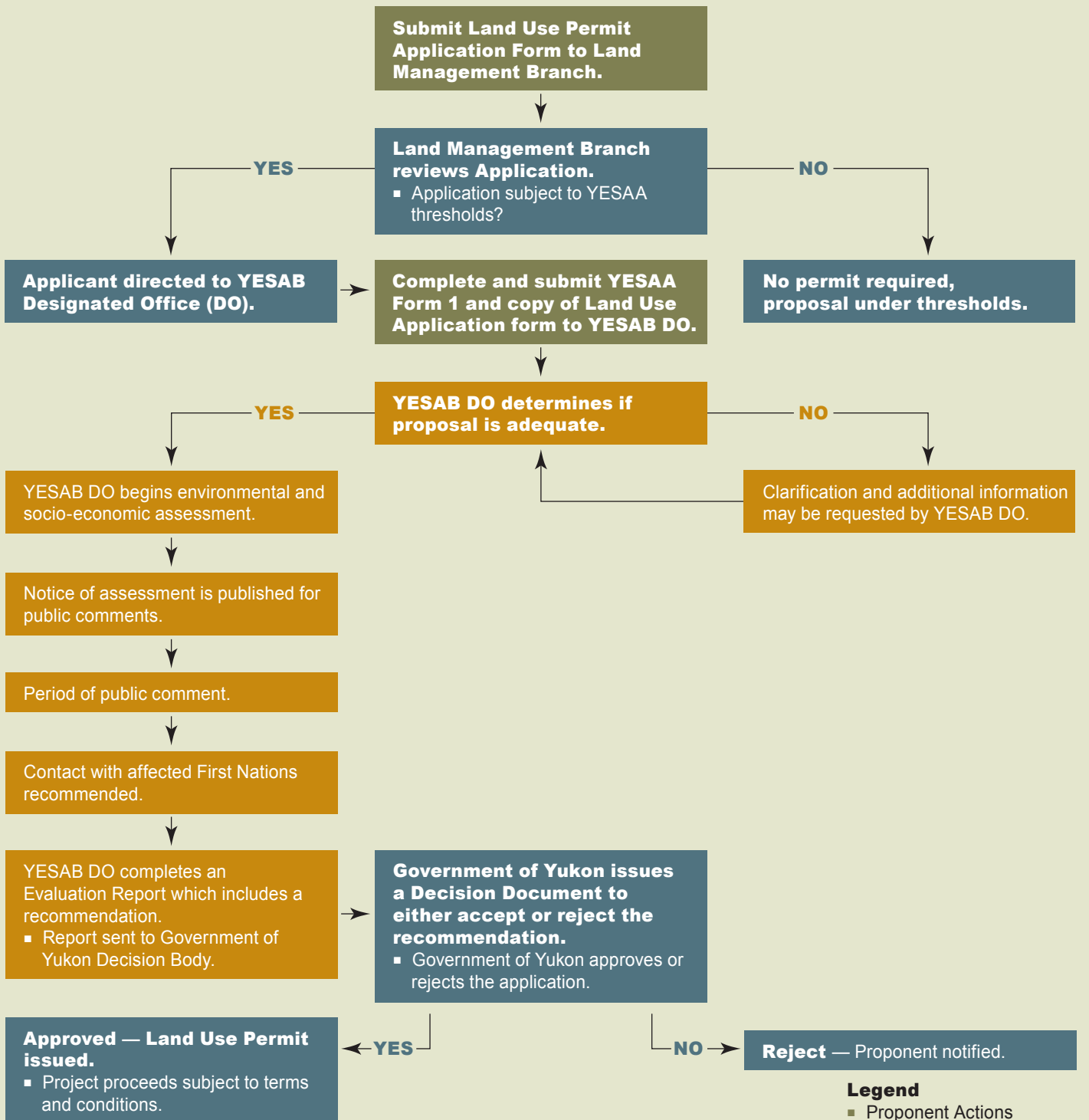
YESAB Executive Committee Screening Process



How to obtain a Land Use Permit

YESAB Designated Office Evaluation Process

A Land Use Permit may be necessary to access claims



Legend

- Proponent Actions
- Government Actions
- YESAB Actions
- Yukon Water Board Actions